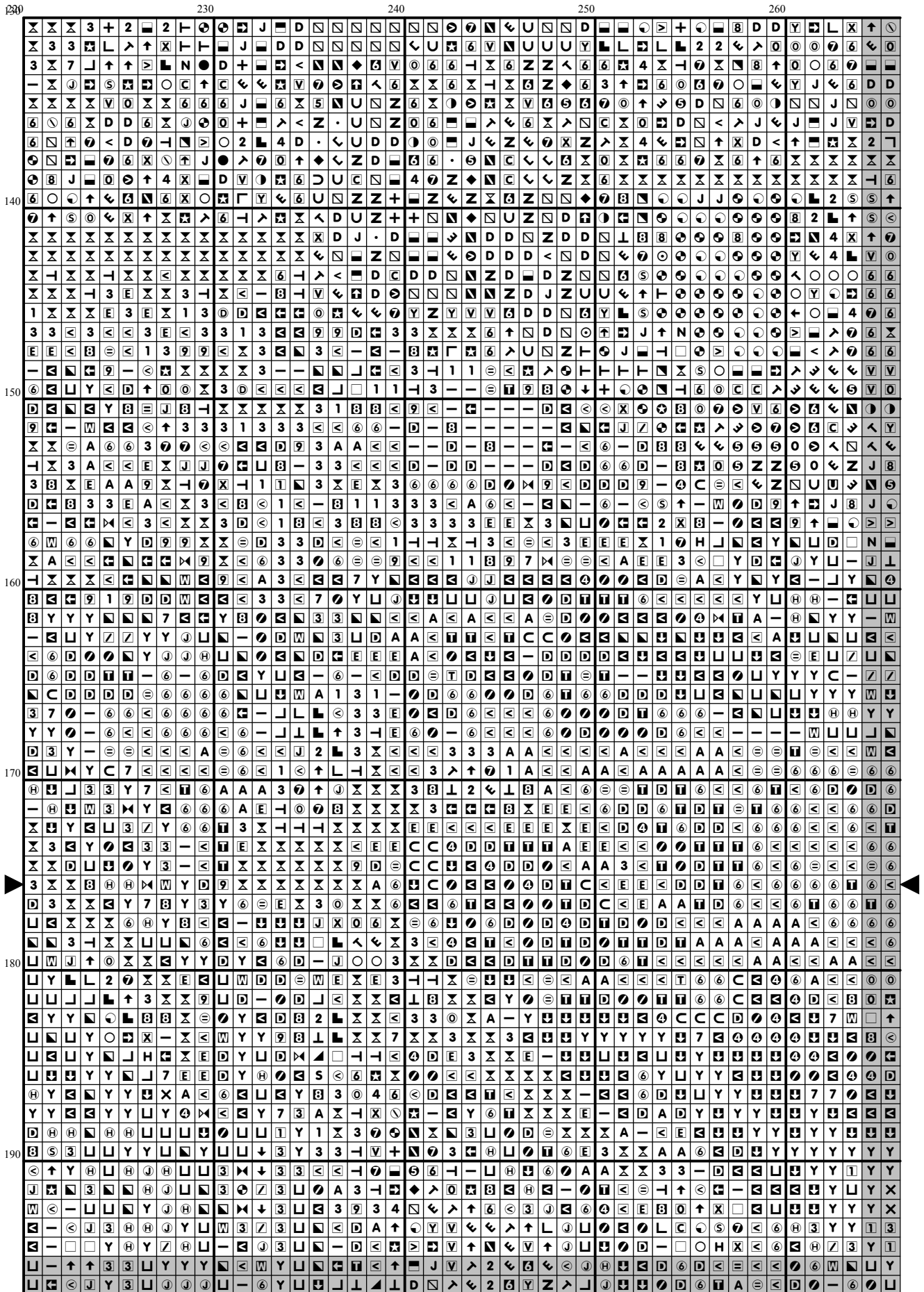
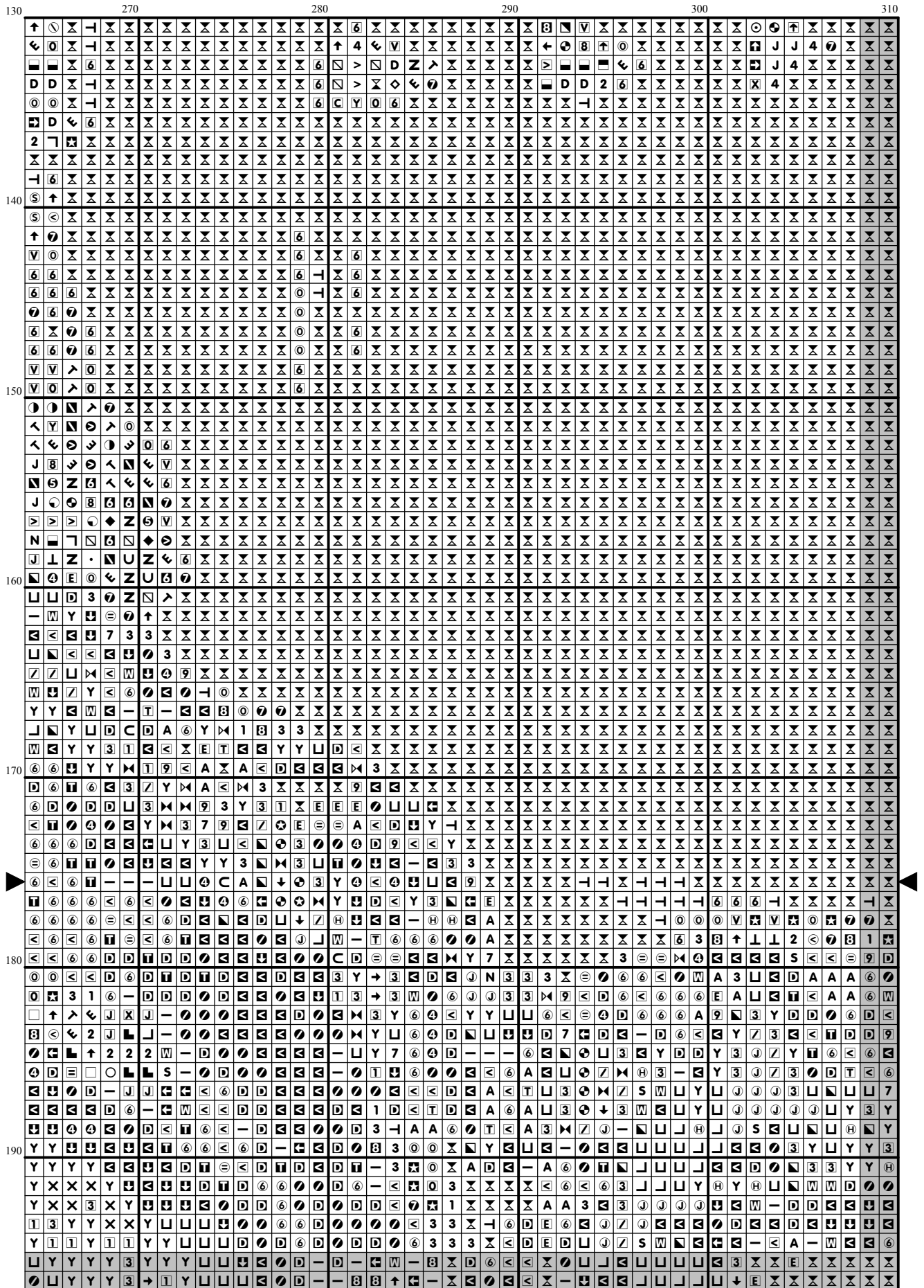
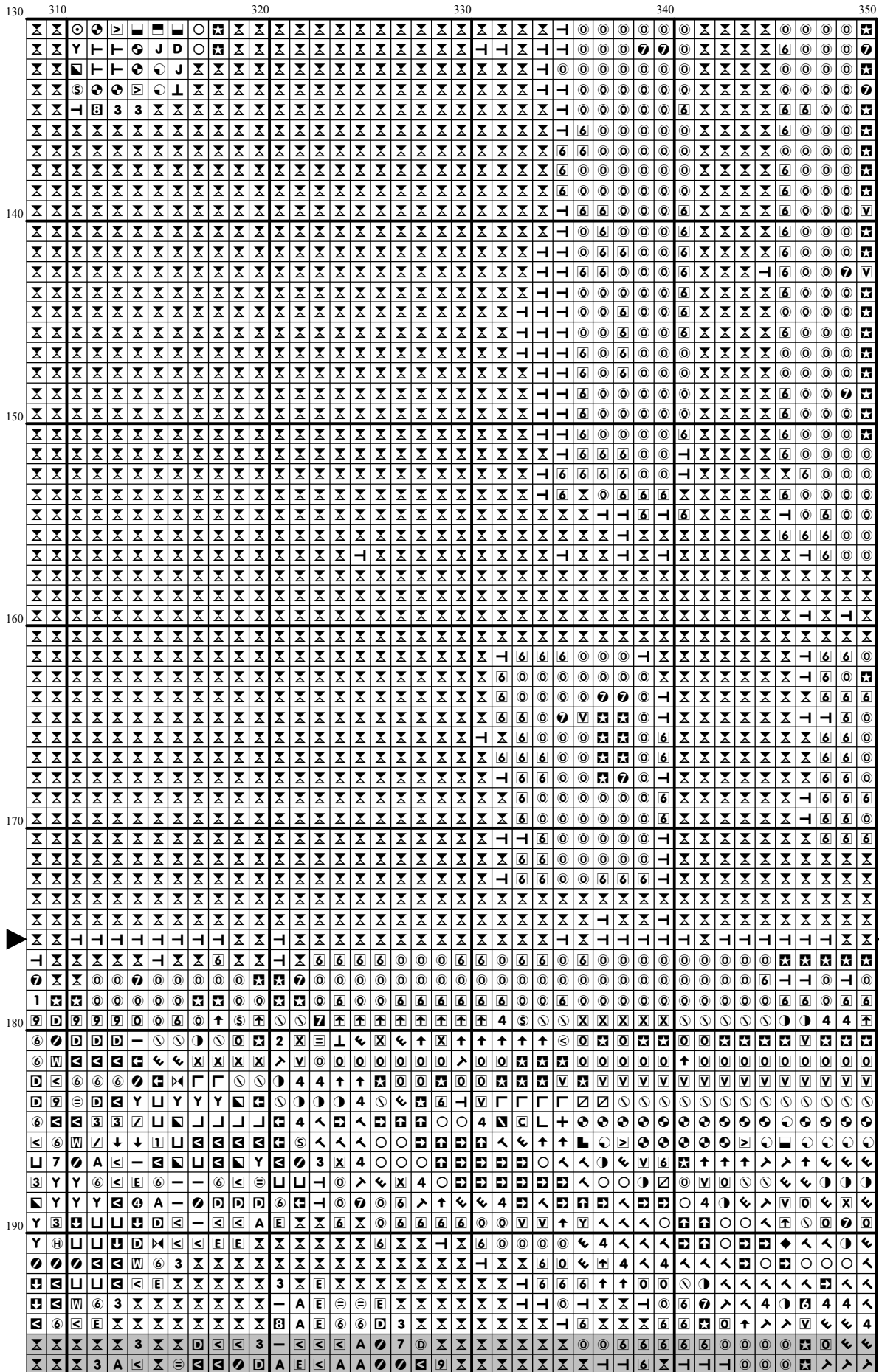
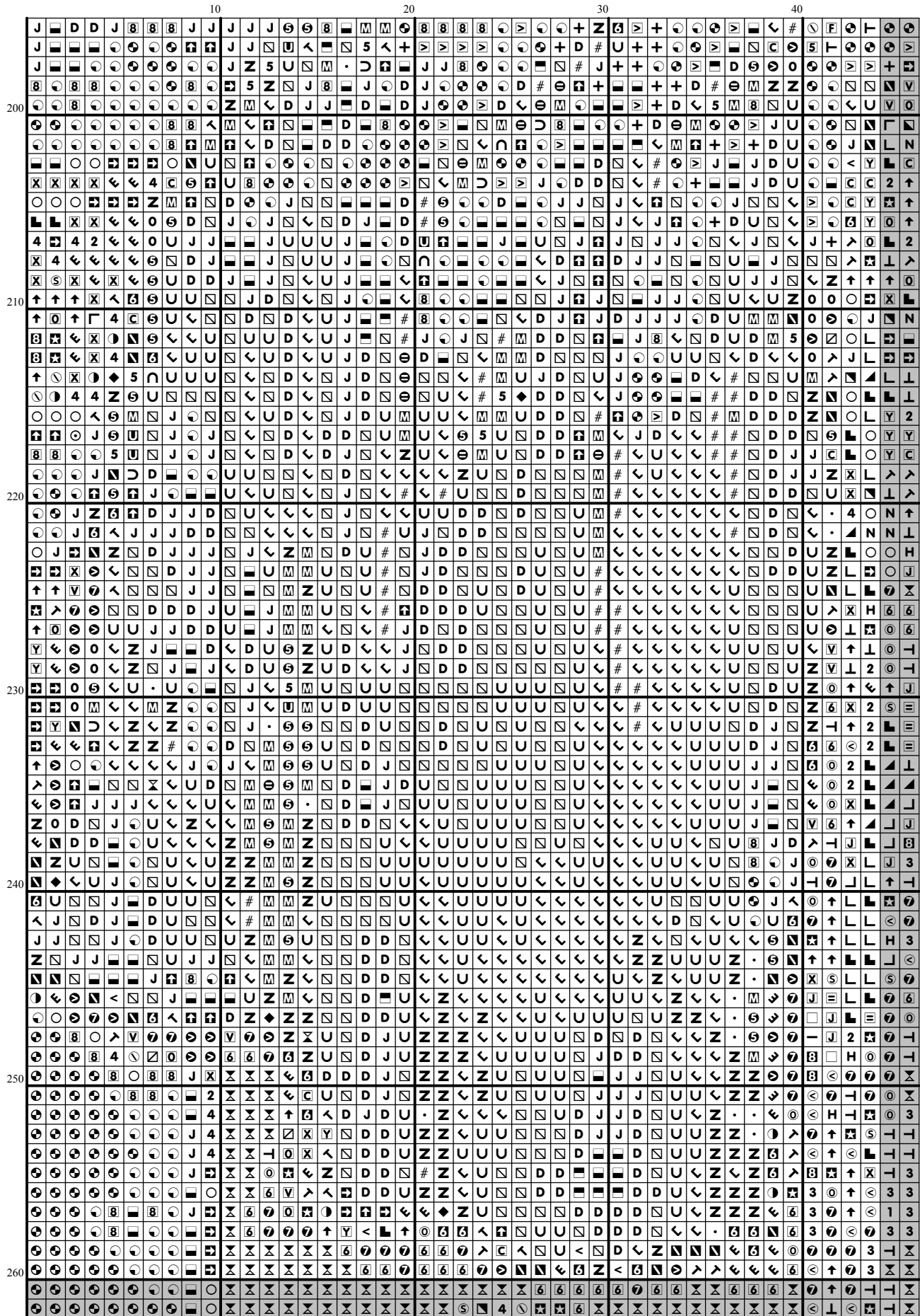


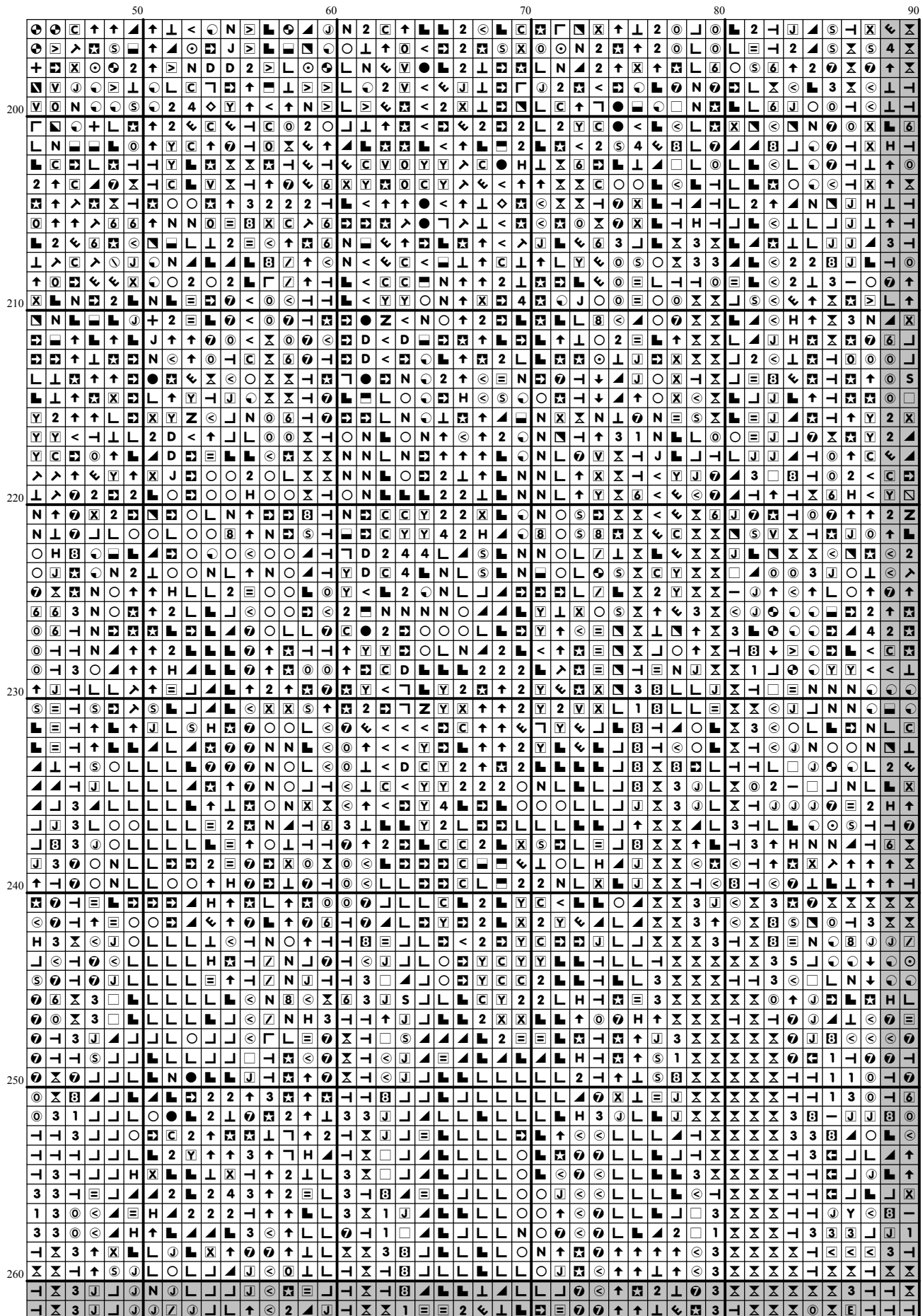
[illegible]

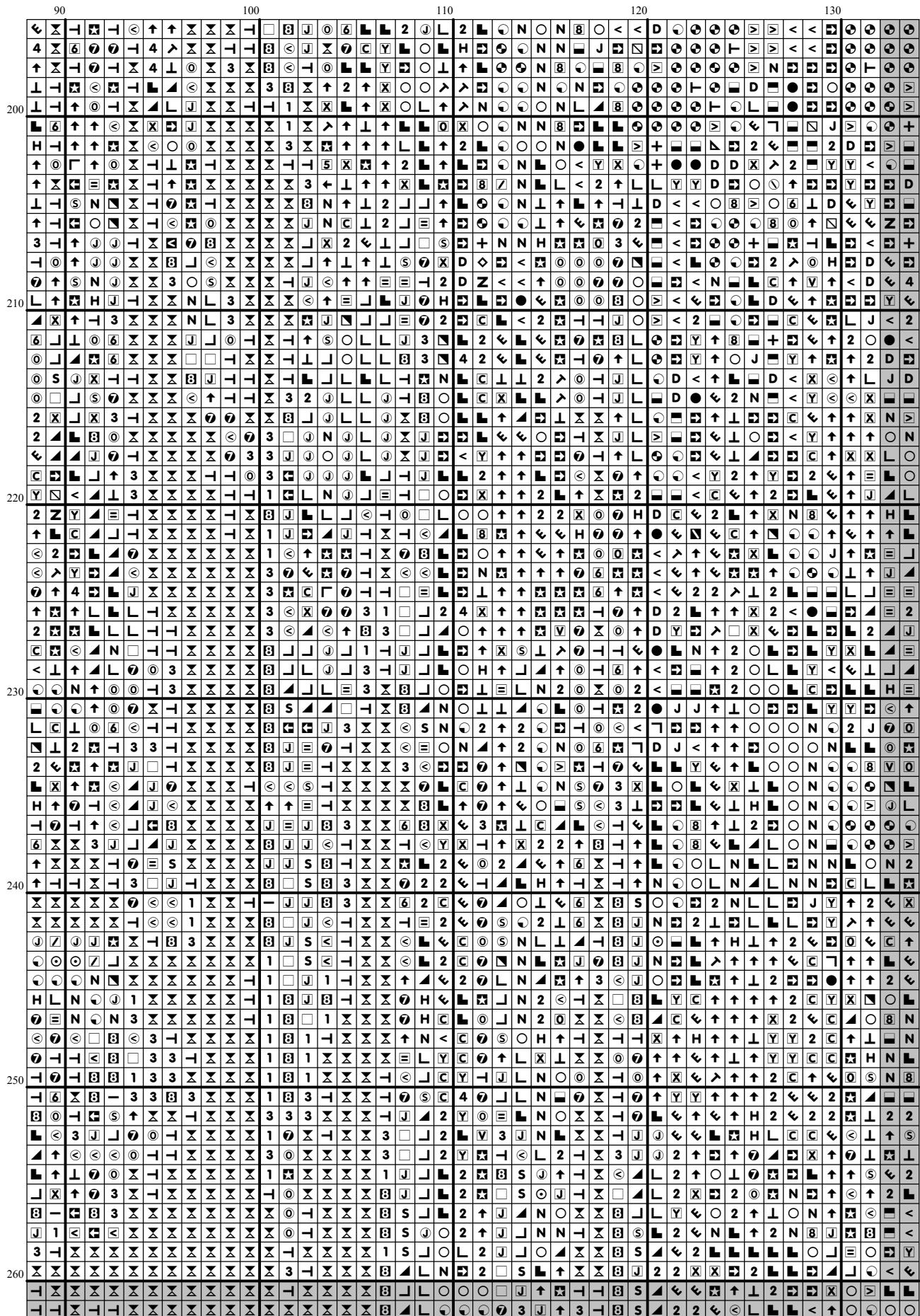


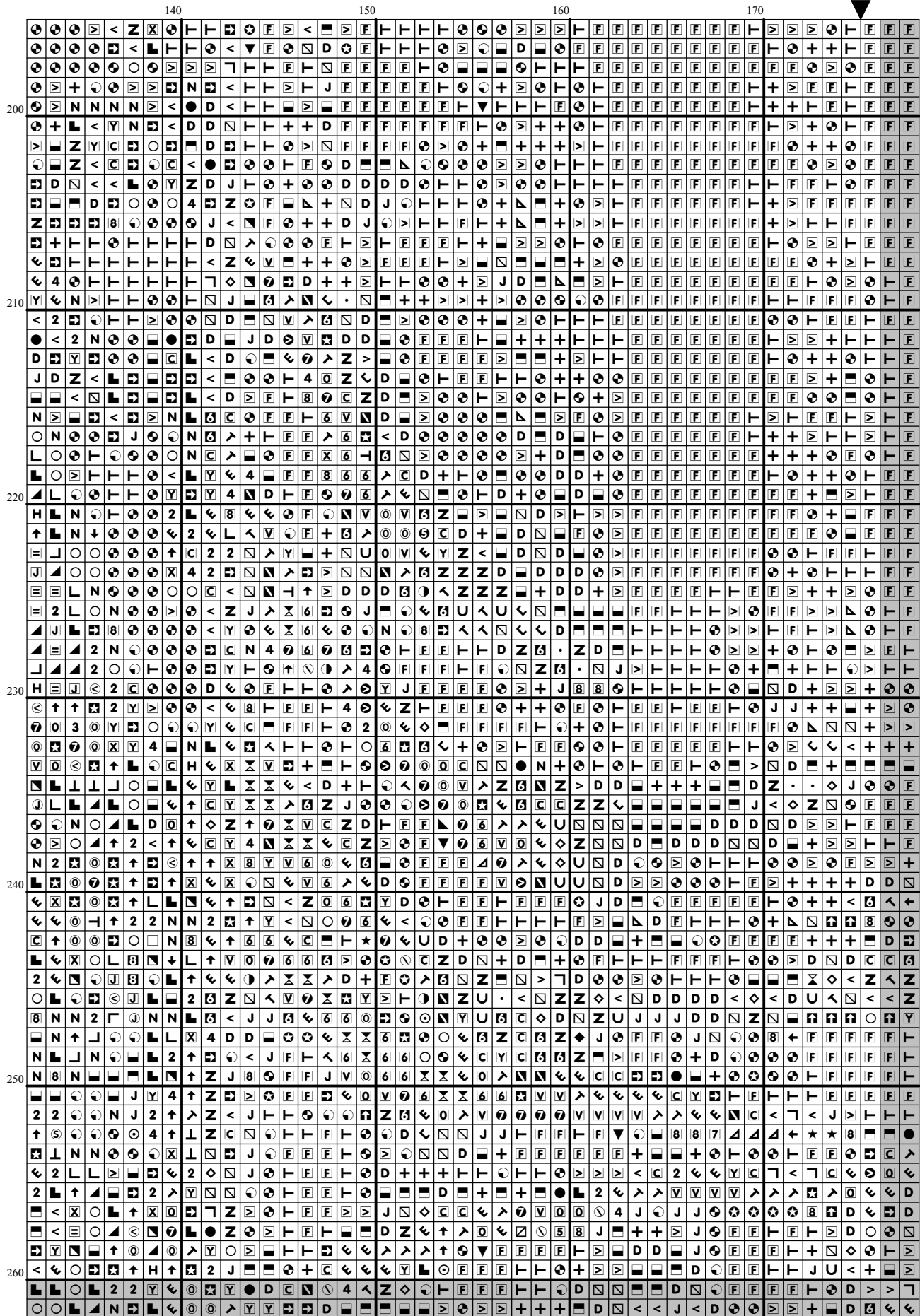


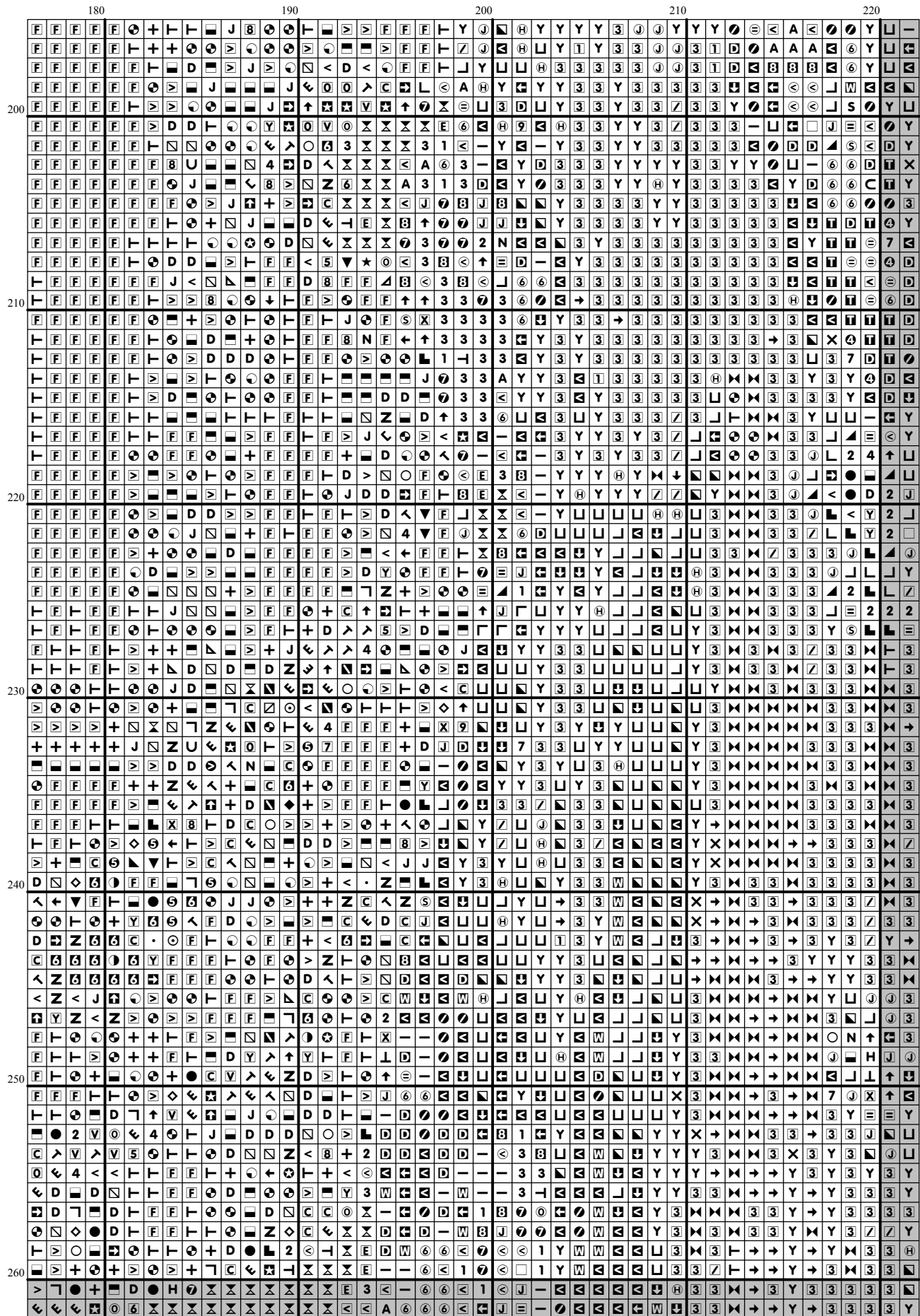


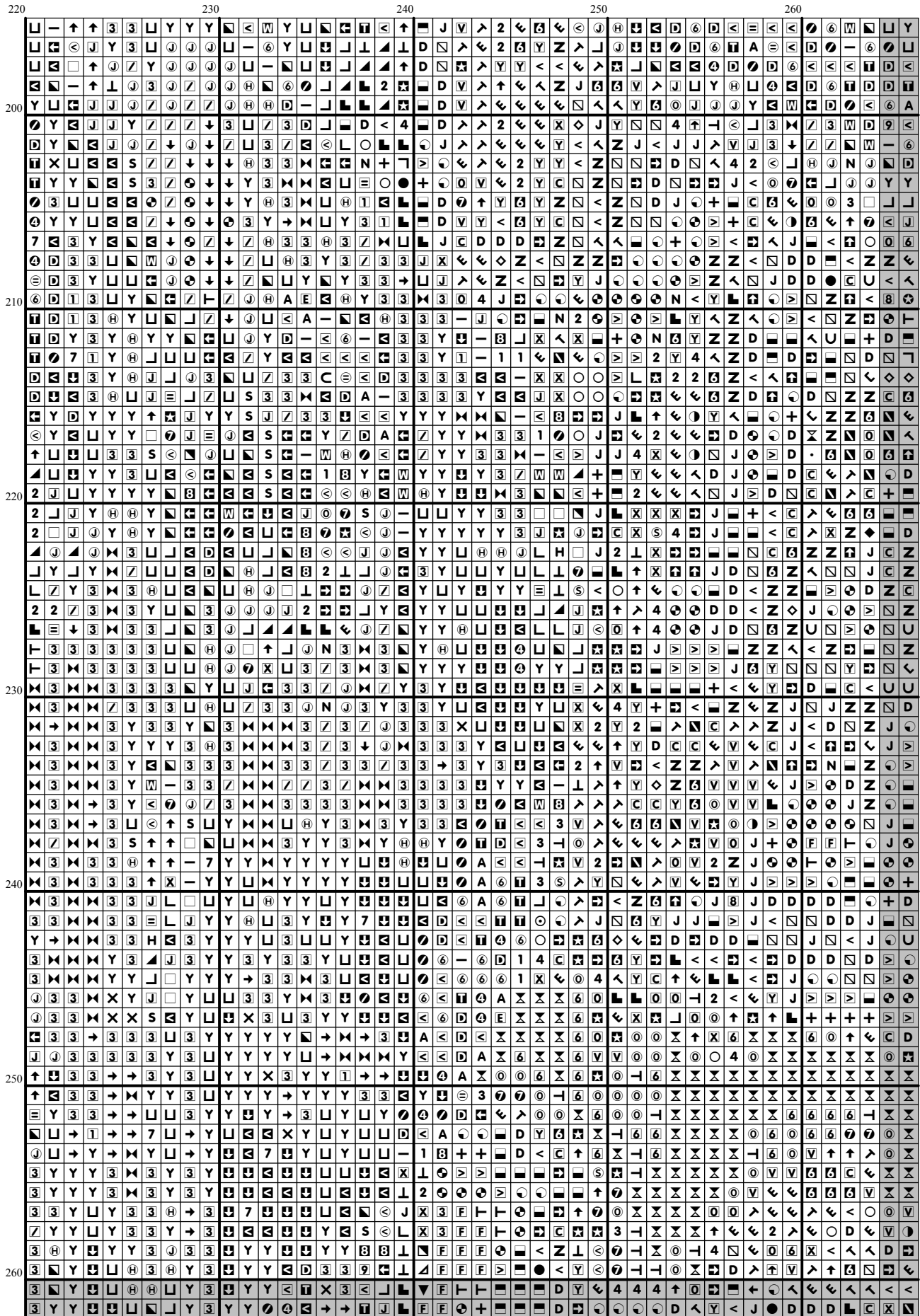




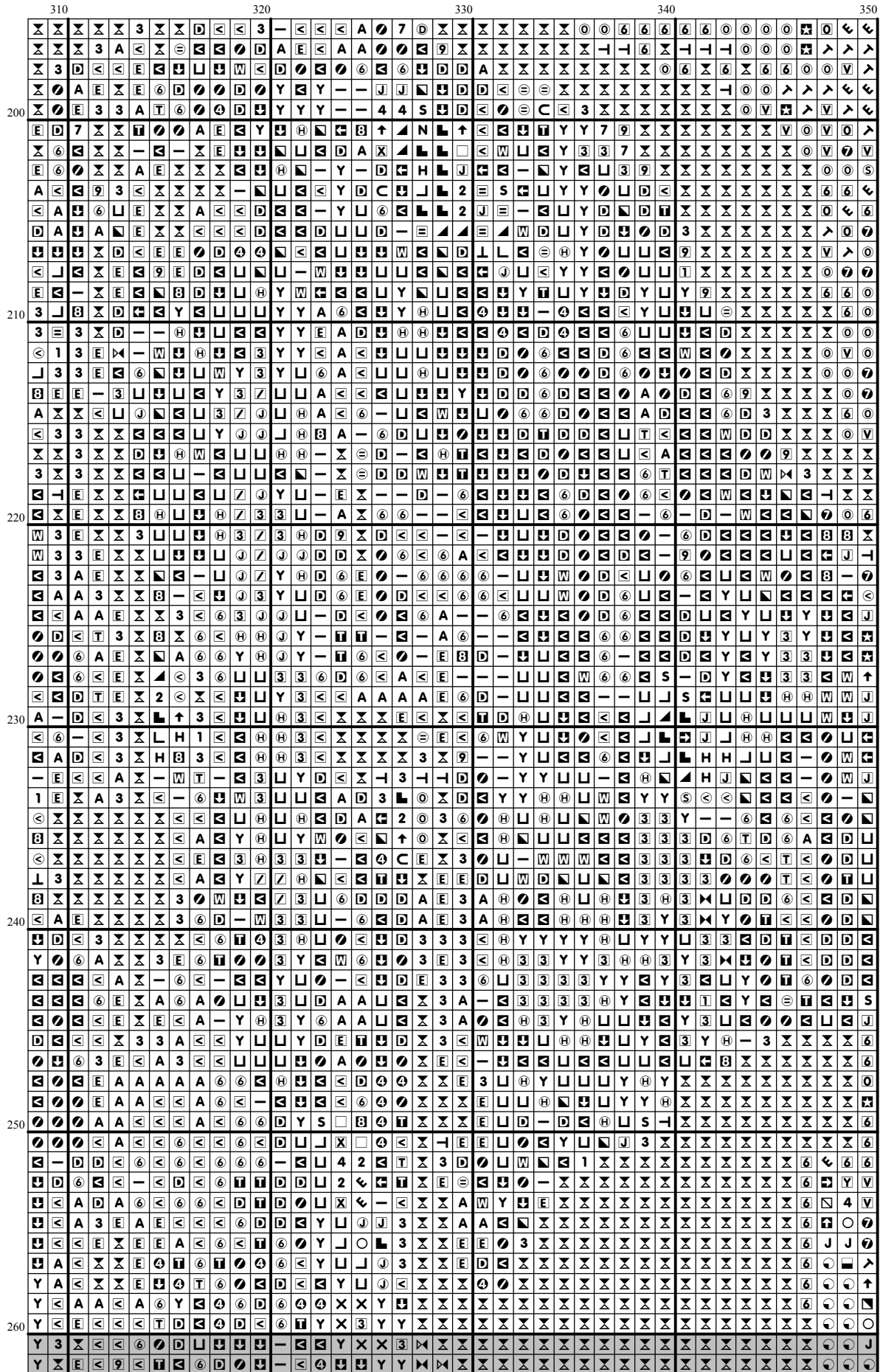


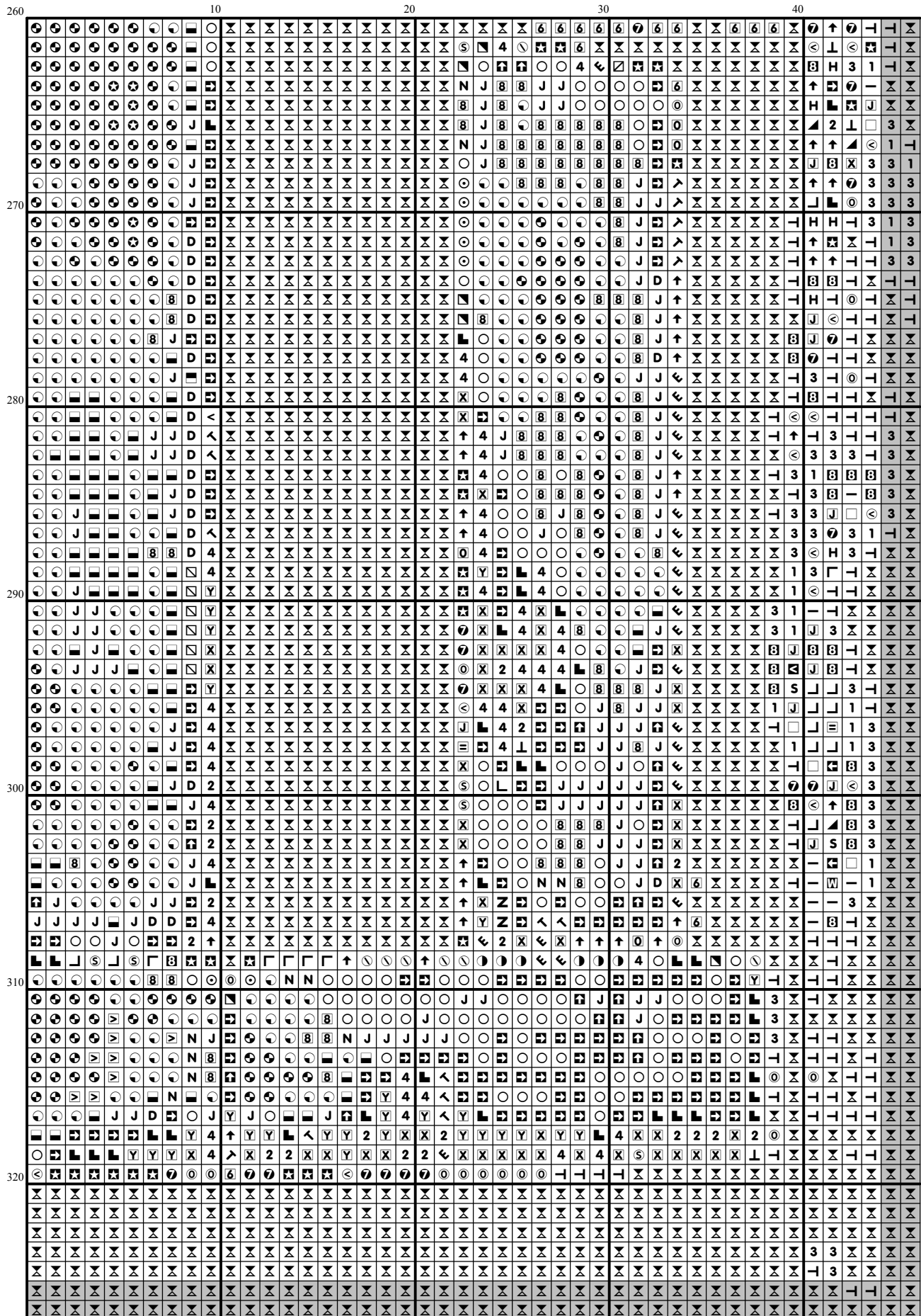


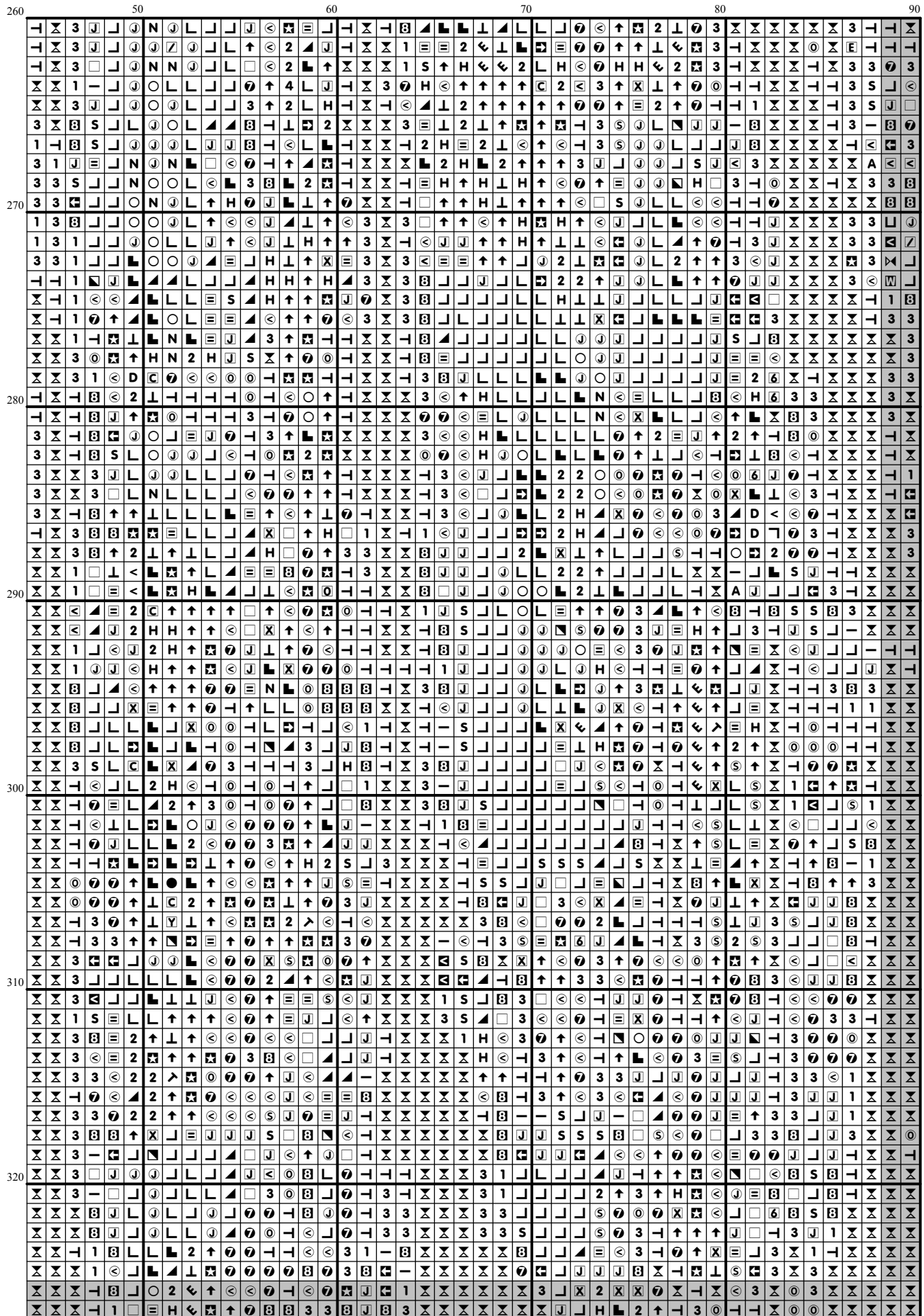




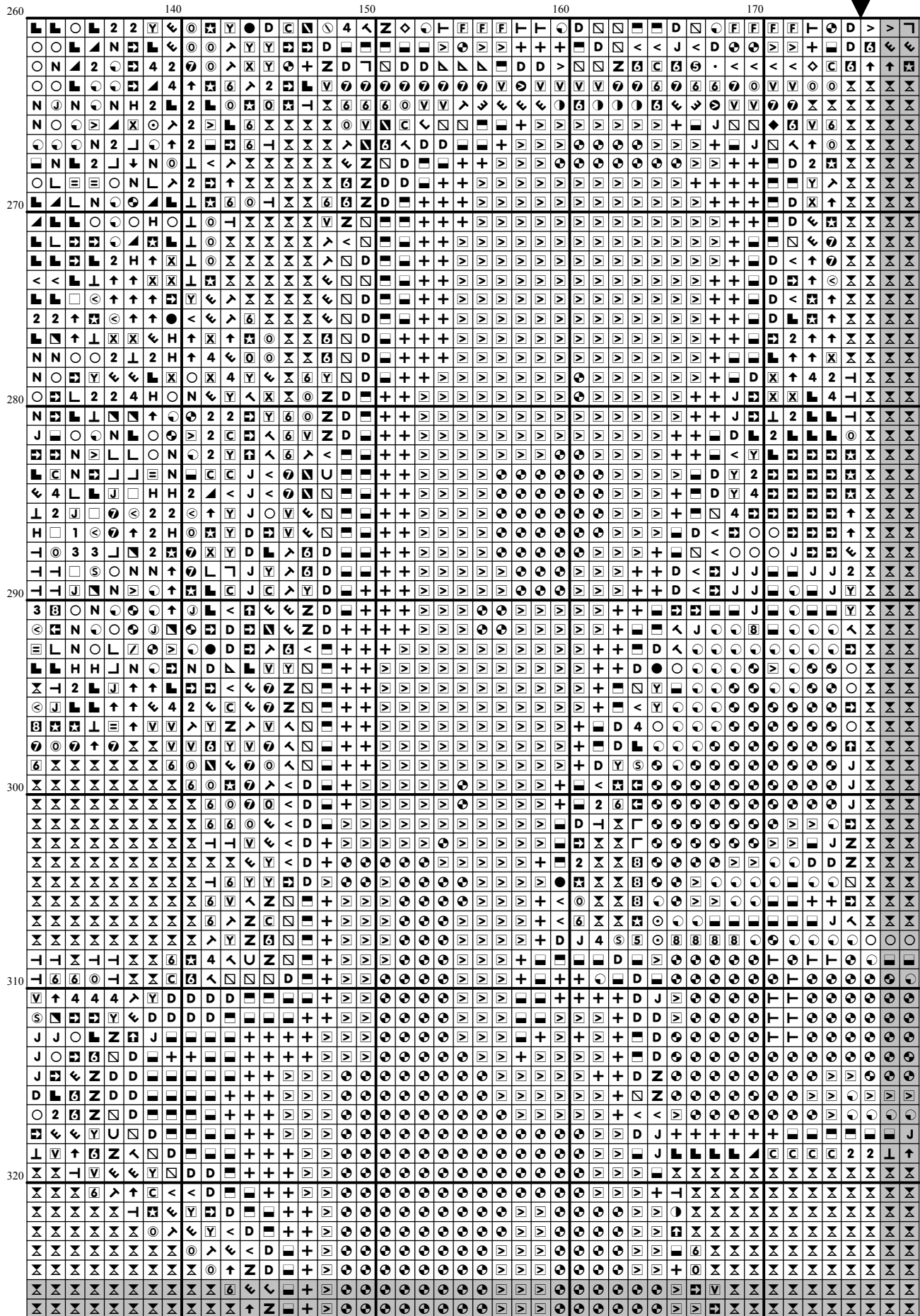
[illegible]

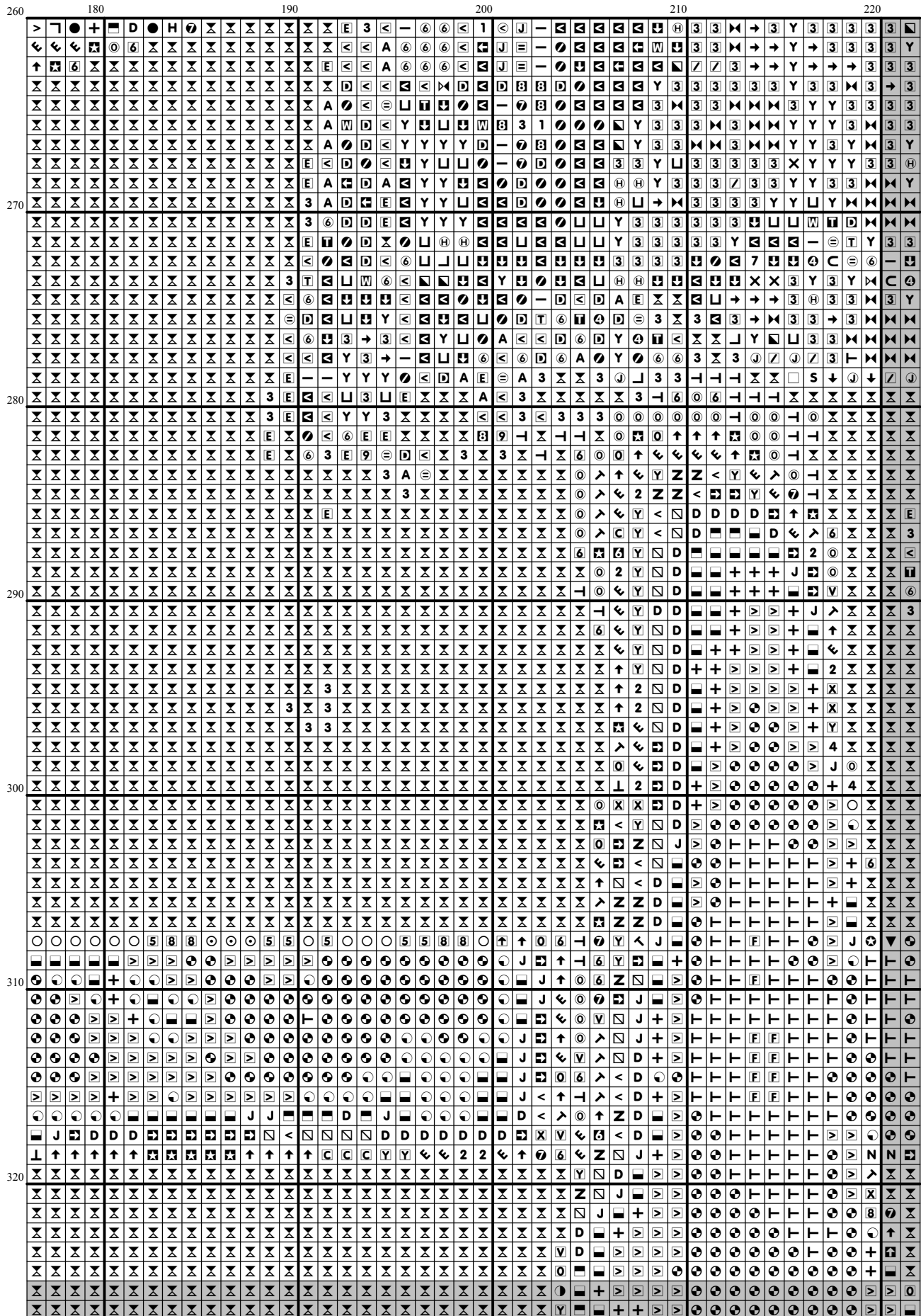


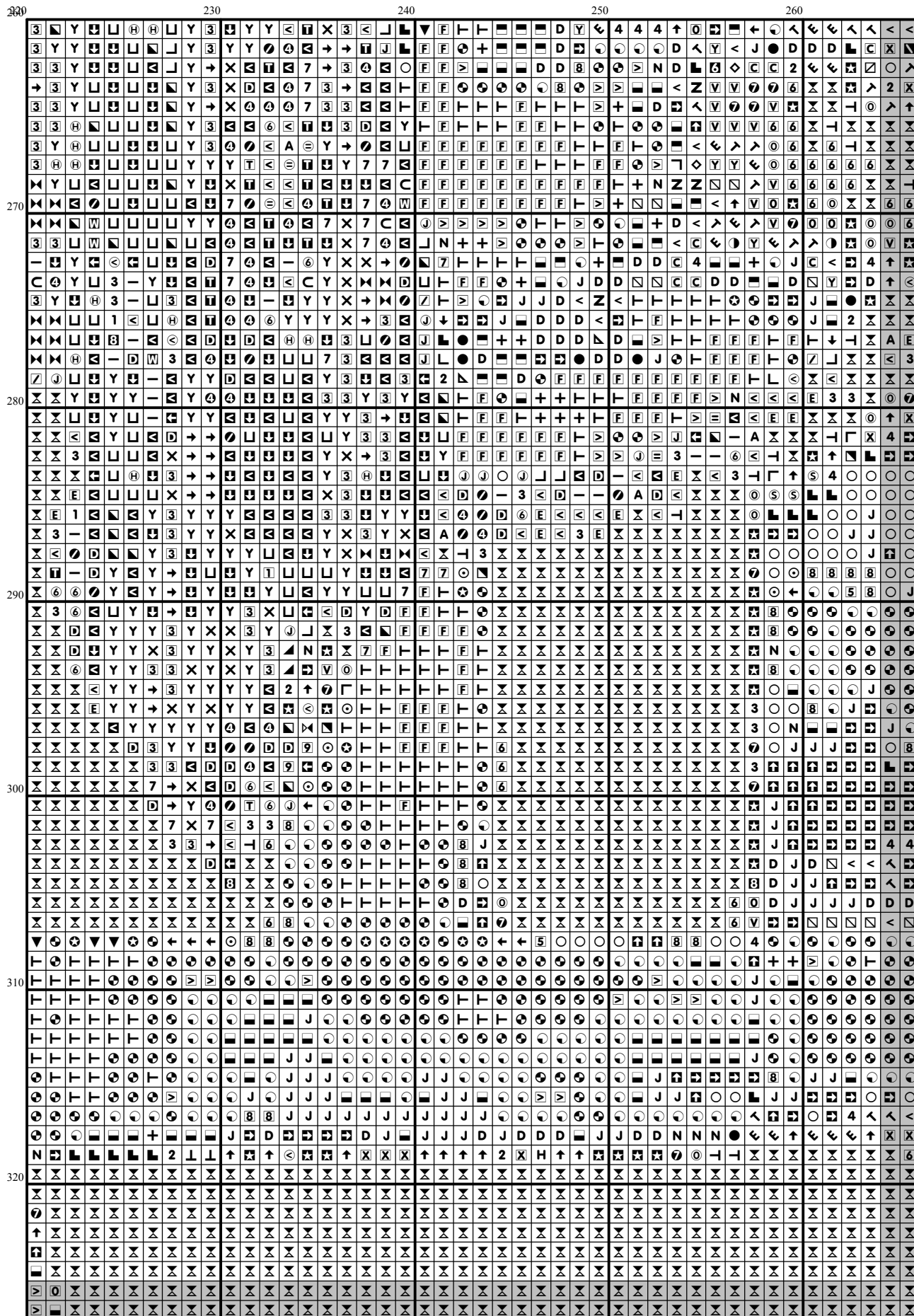


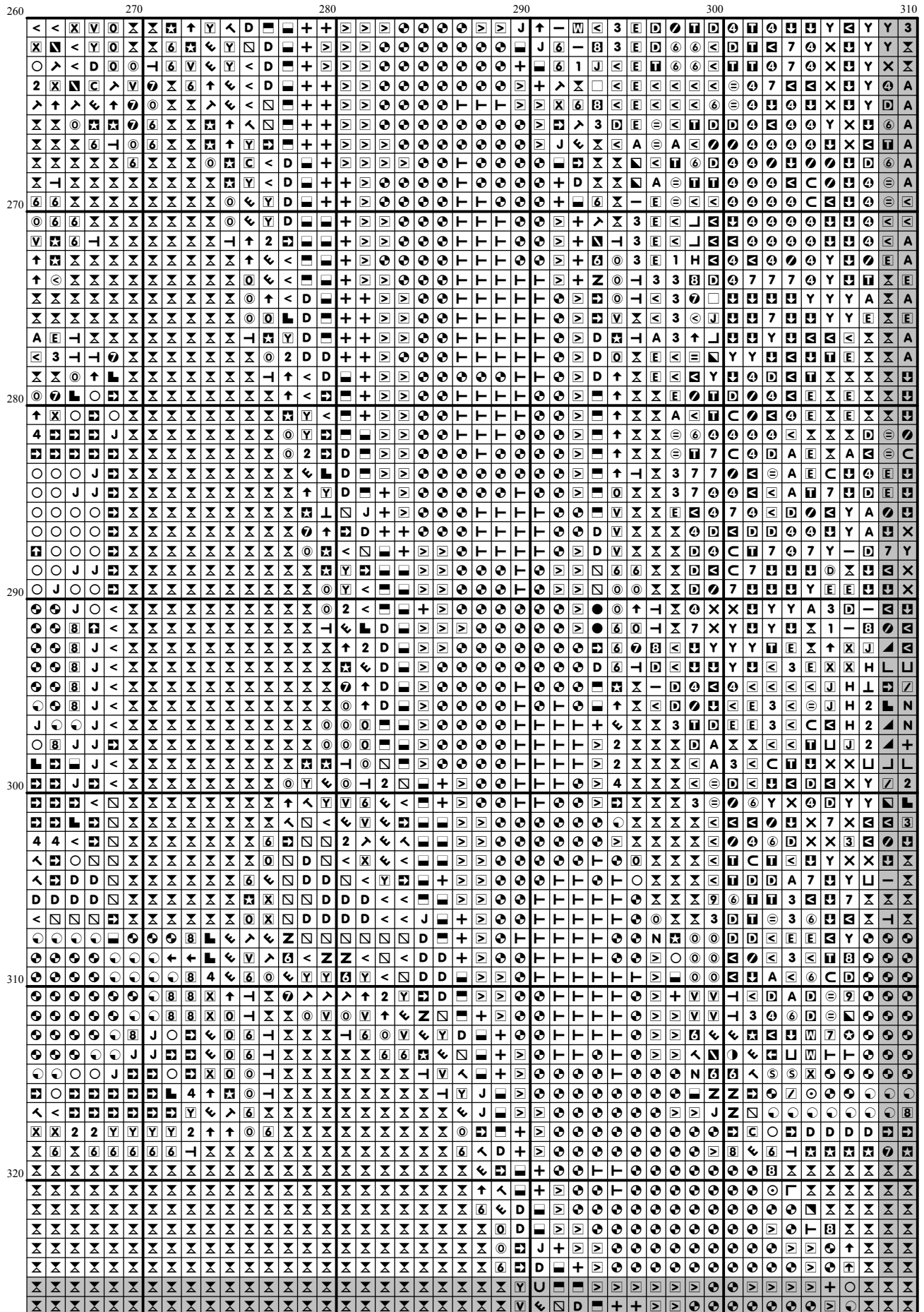




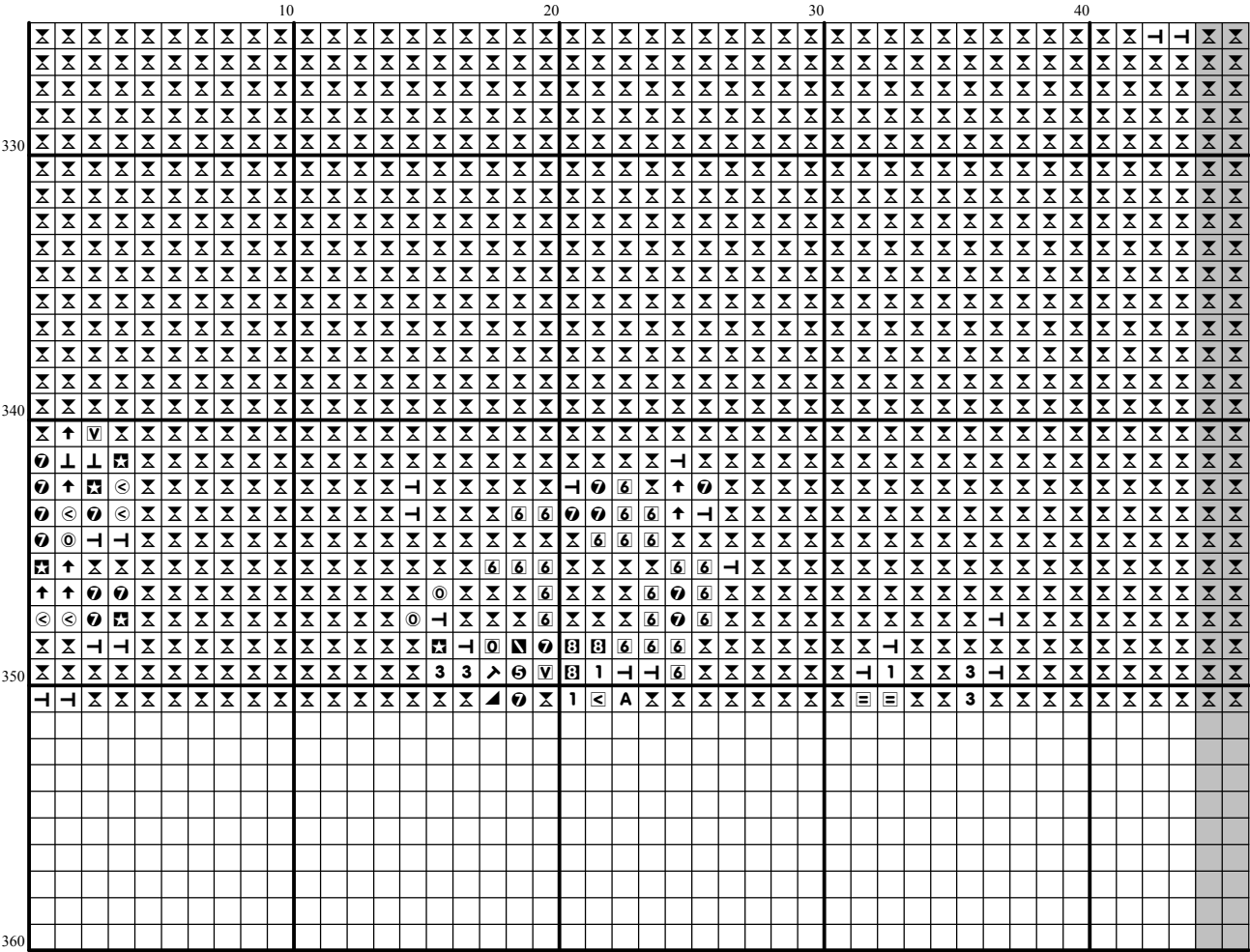


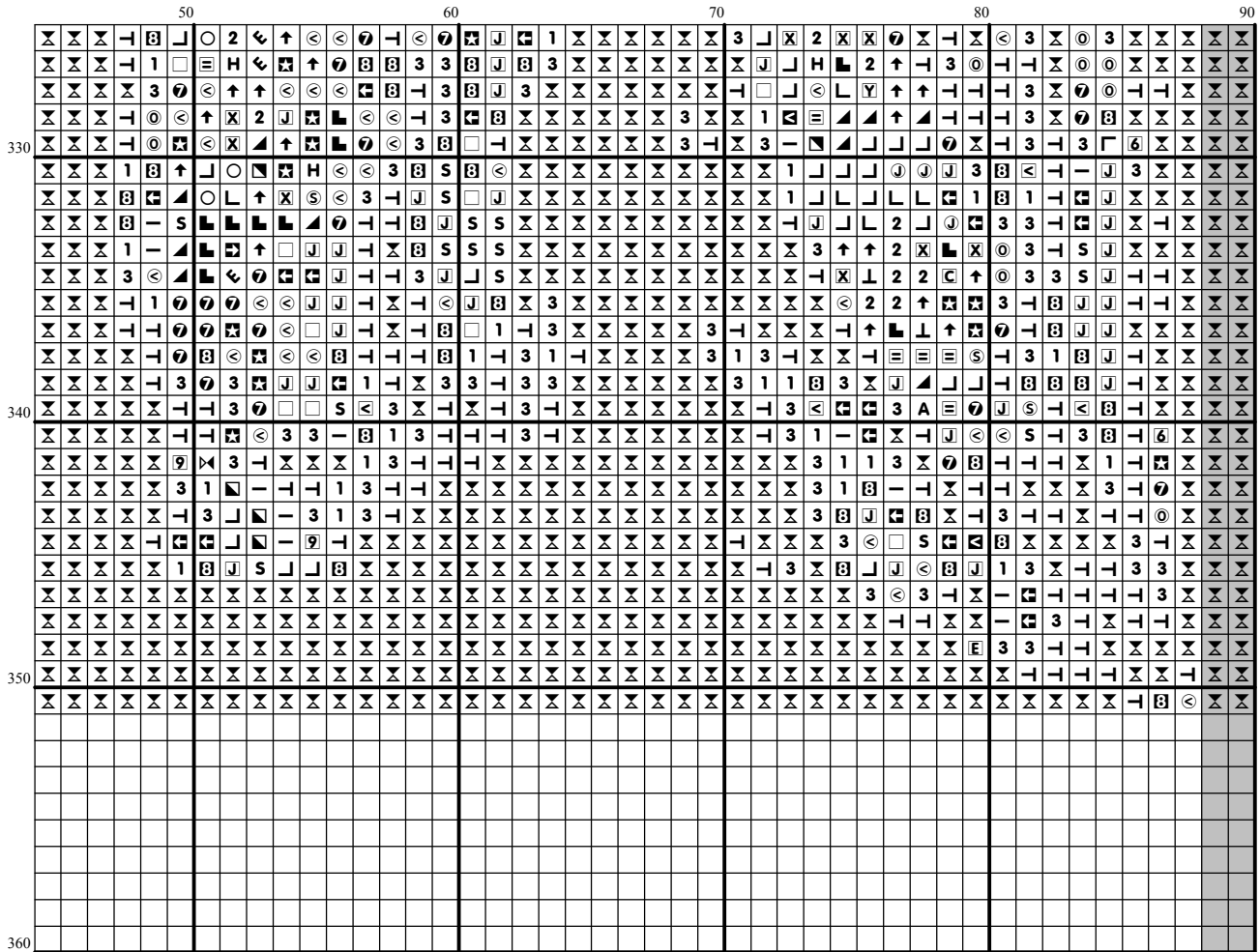


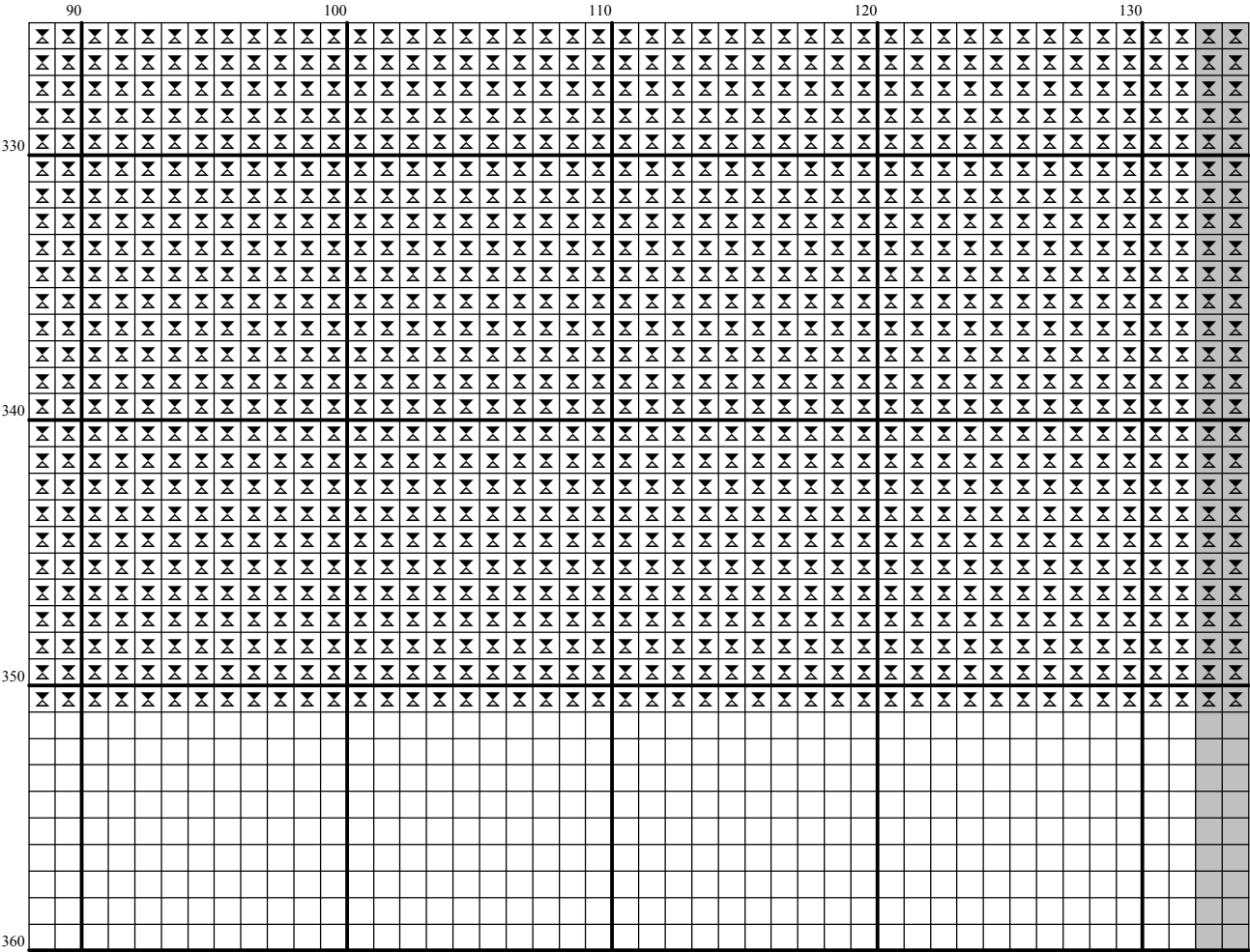


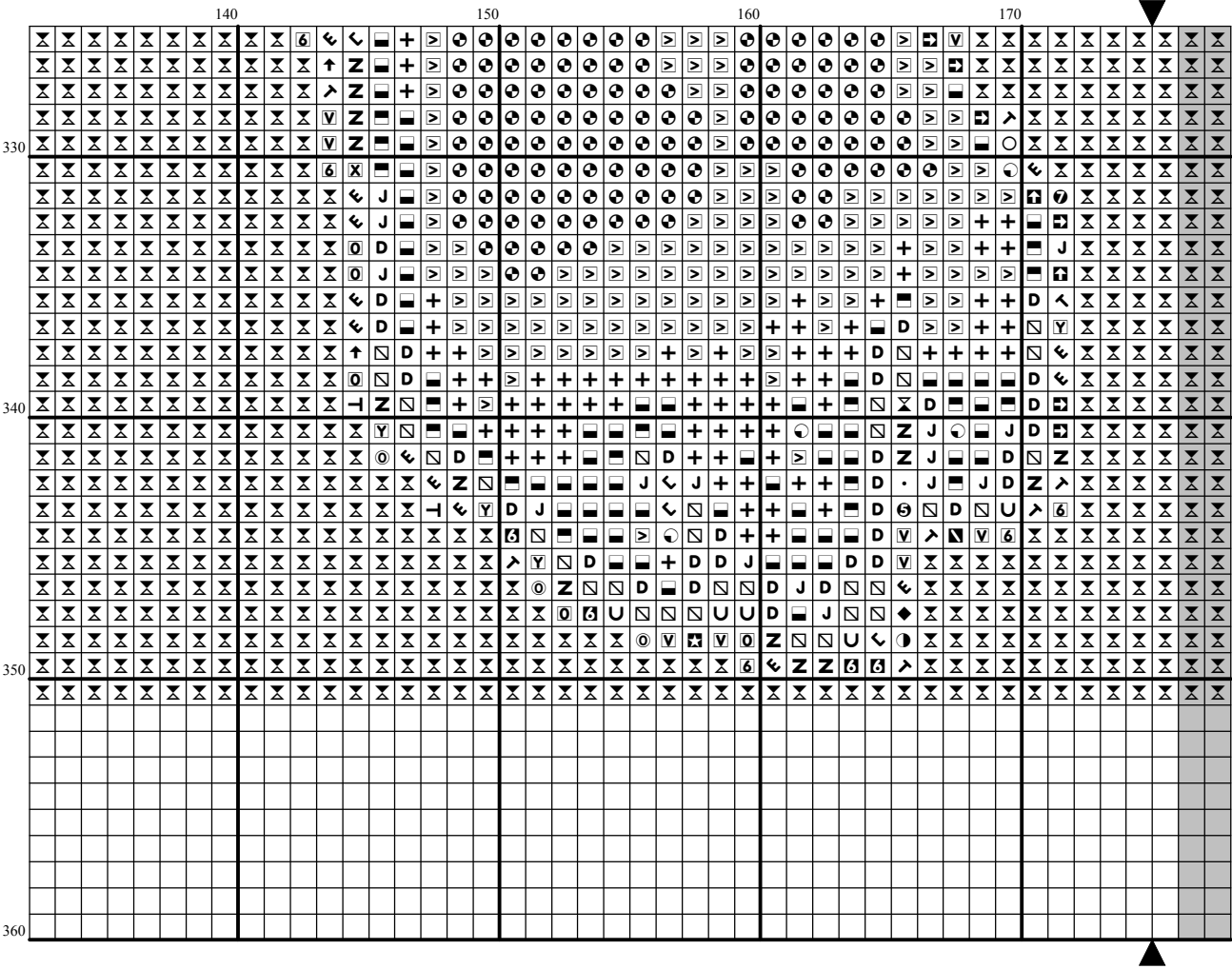


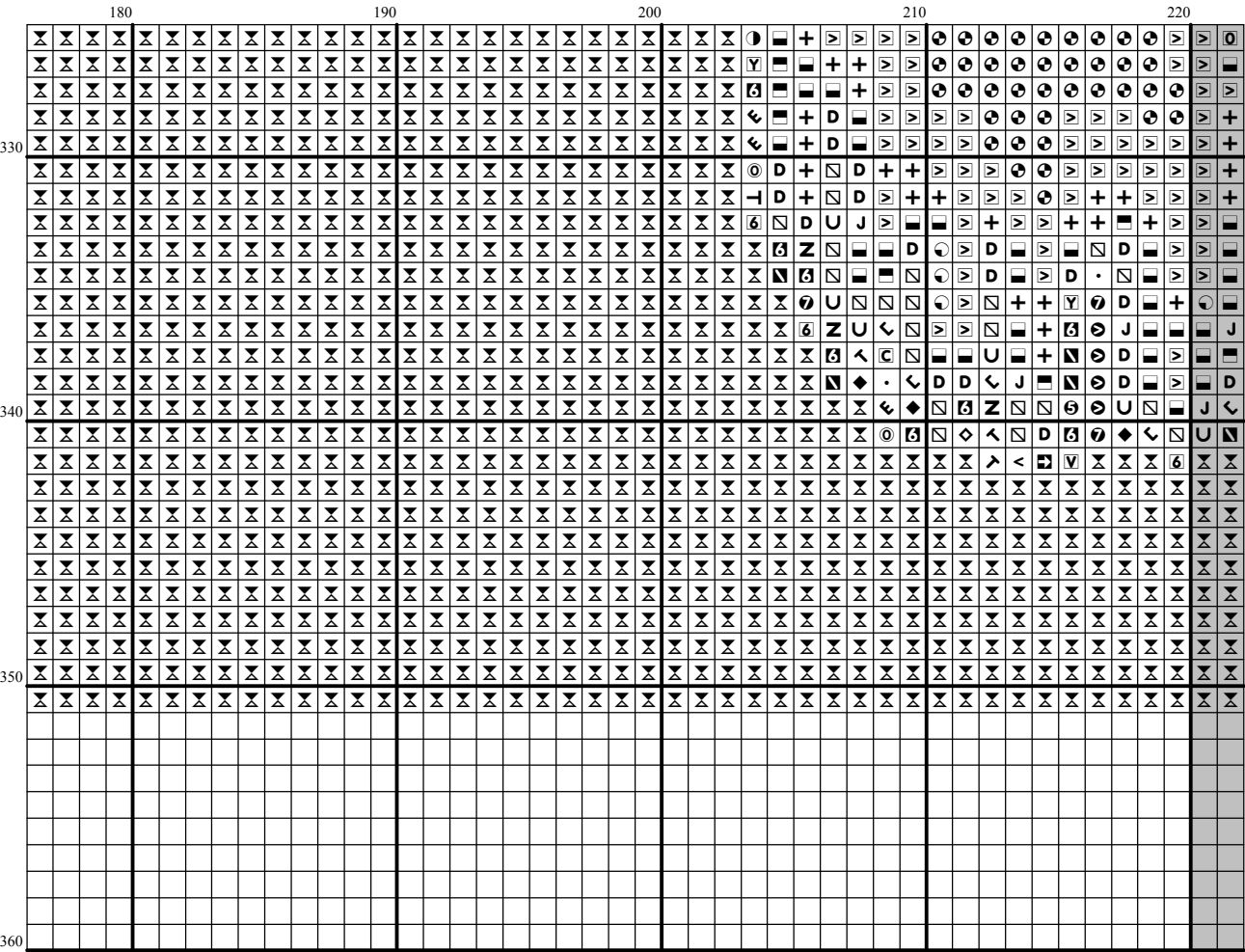
[illegible]

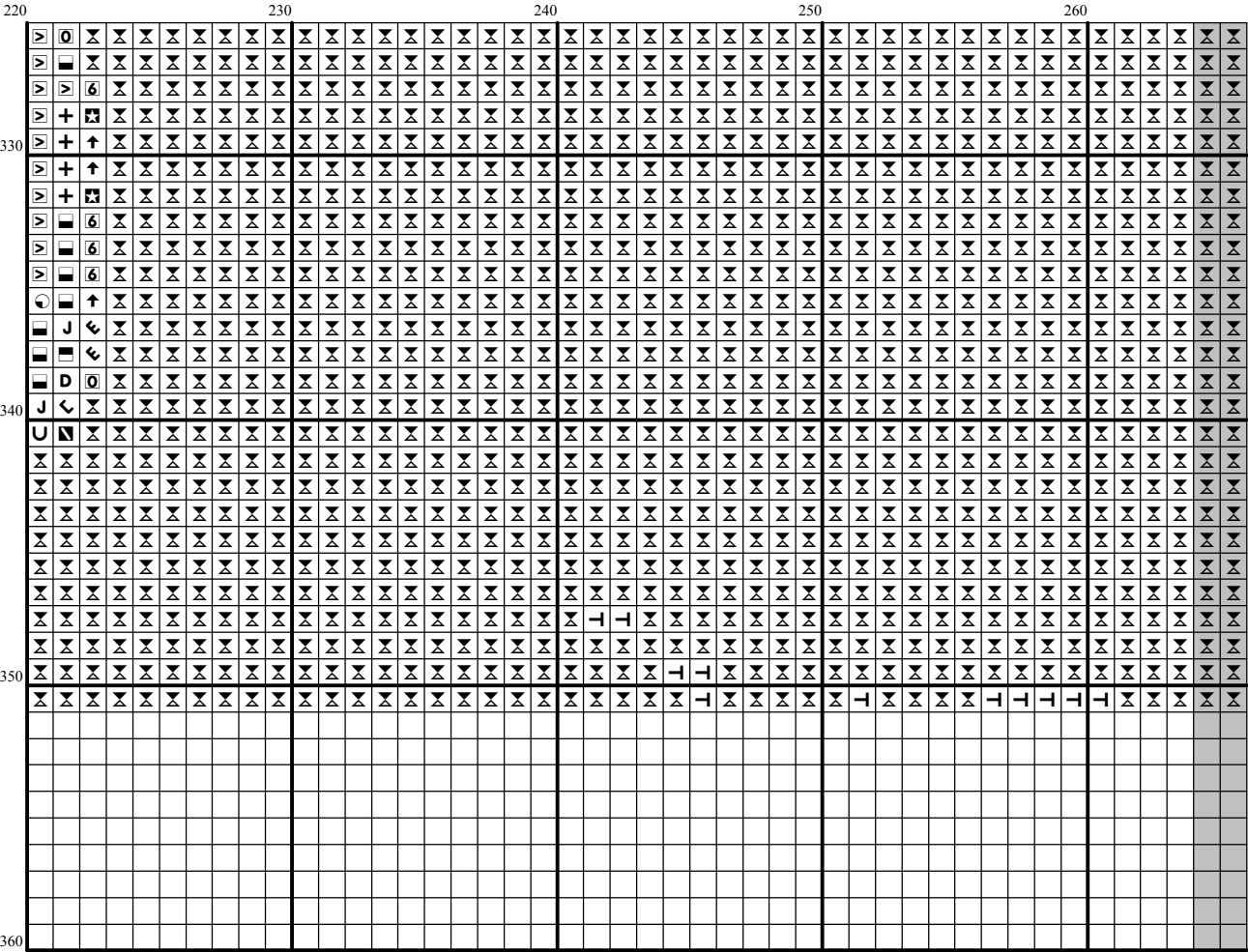


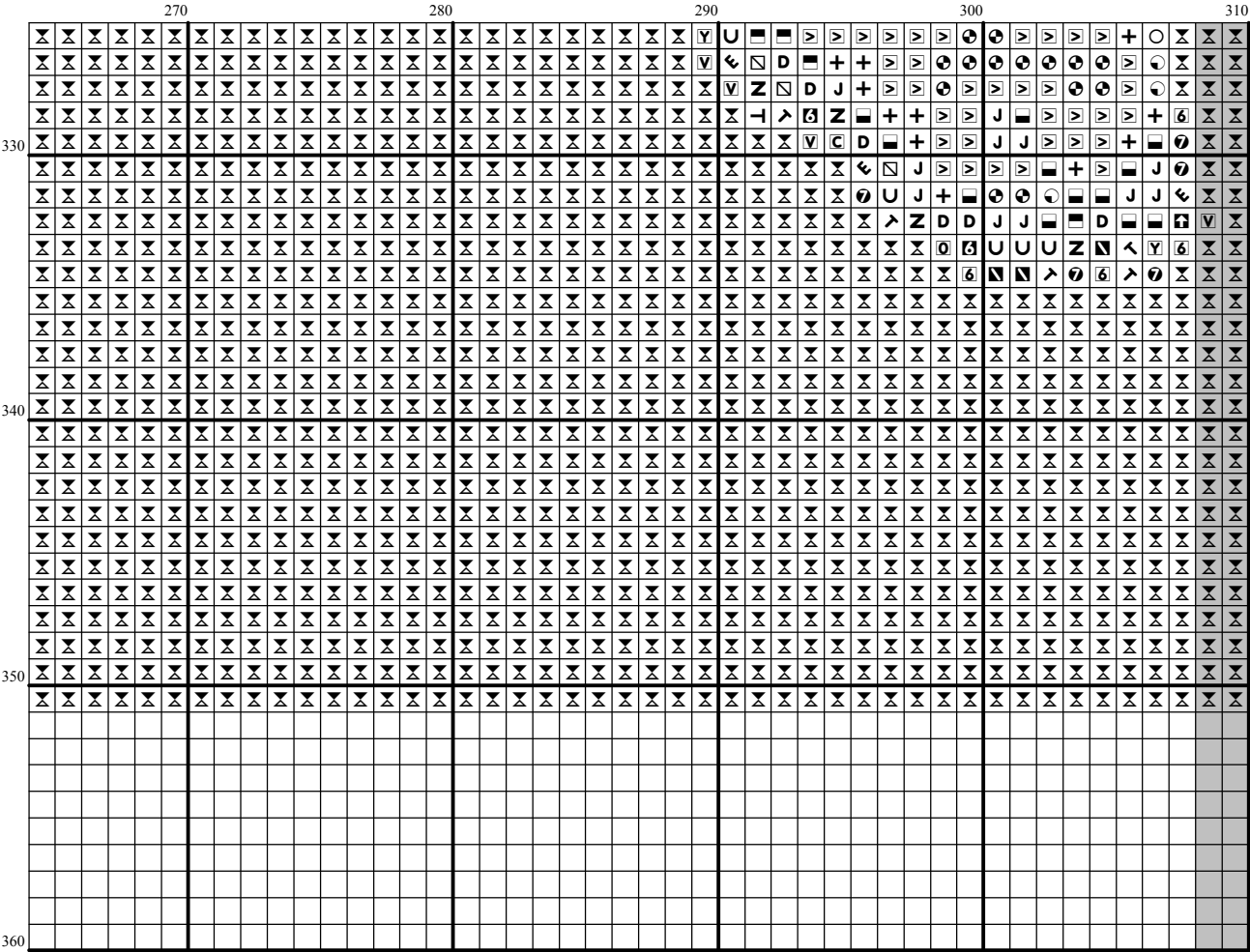


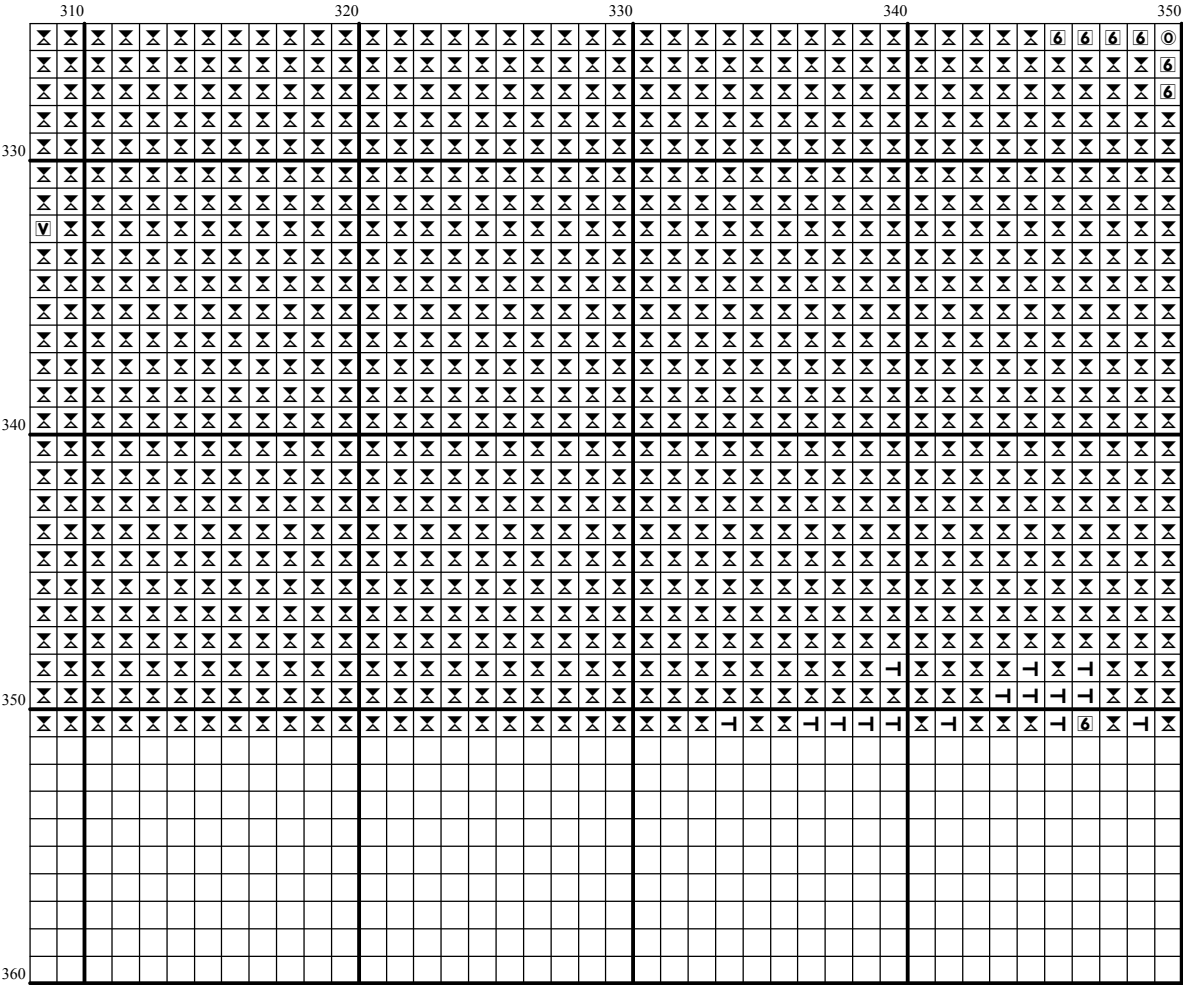












Instructions and Symbol Key for Design "PO118 The Music Lesson"

Fabric: 14 count Cream Aida

Stitches: 350 x 351 **Size:** 25.00 x 25.07 inches or 63.50 x 63.68 cm

Colours: DMC

Use 2 strands of thread for cross stitch

Sym	No.	Colour Name	Sym	No.	Colour Name
	154	Prune rose		164	Pistachio green
	165	Pale moss green		167	Dark mustard brown
	211	Pale violet		224	Light dusty pink
	310	Black		316	Heather lilac
	320	Fern green		347	Egyptian red
	349	Chilli red		351	Coral
	352	Salmon		356	Medium terracotta
	367	Bay leaf green		368	Nile green
	369	Bamboo leaf green		370	Medium mustard
	371	Green plains		400	Brown
	402	Pottery brown		407	Clay brown
	413	Iron grey		420	Hazelnut
	433	Chocolate brown		436	Teddy brown
	437	Camel		470	Olive green
	471	Tarragon green		501	Pond green
	502	Blue green		503	Thyme green
	522	Trellis green		523	Ash green
	535	Stone grey		564	Light malachite green
	580	Cactus green		613	Rope brown
	676	Savannah gold		677	Sand gold
	680	Dark old gold		720	Rust
	721	Papaya orange		722	Orange spice
	725	Sunlight yellow		727	Primrose yellow
	728	Hops yellow		730	Khaki green
	733	Golden green		734	Light Olive green
	738	Sahara cream		740	Orange
	741	Tangerine orange		746	Vanilla
	772	Celery green		778	Antique mauve
	780	Chestnut tree brown		782	Wicker brown
	783	Old gold		801	Mink brown
	815	Cherry red		816	Red fruit
	817	Japanese red		819	Baby pink
	830	Green oak brown		831	Green bronze
	832	Light green bronze		833	Brass
	834	Light brass		890	Deep forest green
	895	Bottle green		898	Teak brown
	900	Saffron orange		919	Red copper
	920	Ochre copper		921	Burnt ochre orange
	928	Light pearl grey		934	Algae green
	936	Oaktree moss green		937	Moss green
	938	Espresso brown		945	Eggshell cream
	946	Fire orange		948	Pale peach
	951	Light eggshell cream		966	Baby green
	976	Nutmeg brown		986	Dark forest green
	987	Basil green		988	Forest green
	989	Fennel green		3012	Marsh green
	3033	Antique silver		3042	Lilac
	3047	Silver birch beige		3052	Silver green

■	3053	Tweed green	→	3072	Pale pearl grey
▷	3078	Pale yellow	◁	3345	Dark Hunter Green
—	3346	Hunter Green	⌚	3348	Lettuce heart green
◻	3363	Herb green	⌚	3371	Ebony
◆	3712	Blush pink	◻	3726	Dark antique mauve
⌚	3772	Rosy tan	←	3774	Pale desert sand
↙	3777	Leather red	⌚	3816	Snake green
●	3821	Straw yellow	■	3822	Light straw yellow
⊙	3823	Ivory	4	3828	Oaktree brown
⌘	3833	Light strawberry	⌚	3852	Mustard yellow
⌘	3853	Copper	◻	3854	Spicey gold
■	3855	Autumn gold	◻	3857	Dark red wine
⌚	3860	Taupe mauve	◻	3861	Light taupe
◻	3865	Winter white	⌘	ECRU	ECRU

This chart has been designed and printed with our best intentions of being without mistakes. However, the possibility of human error, printing mistakes or the variation of individual stitching does exist, and we regret that we cannot be responsible for this.

Note: The shaded blocks on the chart represent overlapping stitches.
 Copyright © Classic Cross Stitch 2005 All rights reserved.